

MCLAMP MANUAL CLAMPING SYSTEM



MCLAMP CLAMPING SYSTEM



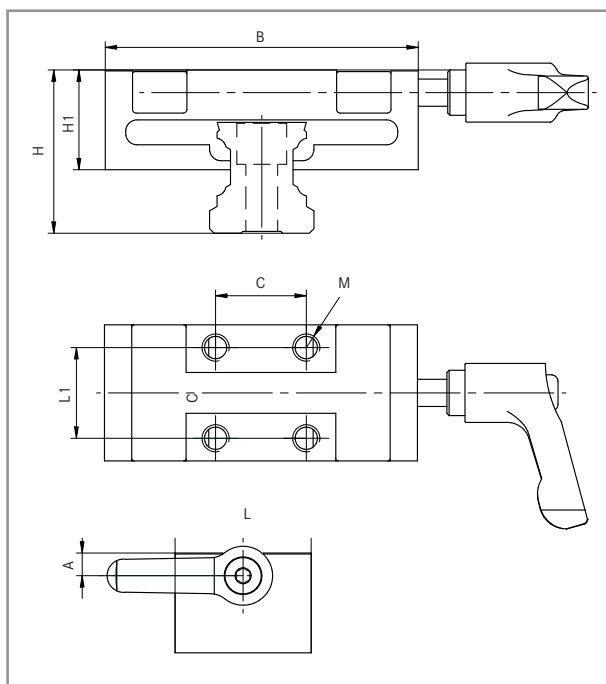
The MClamp supplements the HEMA pneumatic rail clamps with a manually operated clamping element with high retaining forces.

The H shaped cross section of the clamping body corresponds to the body of the HEMA LinClamp elements, i.e. the clamping function and the automatic return on release are based on the same principles as the LinClamp Series that has been tried and tested thousands of times. Four tapped holes enable easy fitting and universal compatibility.

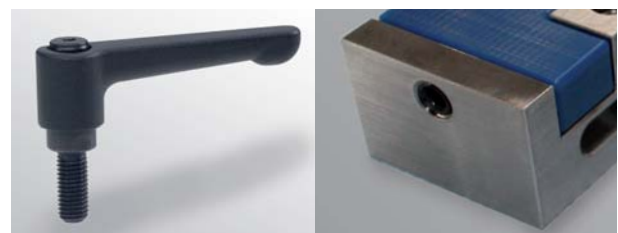
Advantages of MClamp

- low cost entry level rail clamp version
- **4 tapped holes for easy fitting, universally compatible**
- high axial stiffness
- reliable clamping with max retaining forces of 1100 N
- suitable for all manual clamping jobs, e.g. for positioning against stops, transport locks, securing working positions at jigs and assembly stations, etc.
- precise positioning without affecting longitudinal or transverse forces on the rail; the clamping forces always act vertically to the rail axis and are transferred symmetrically
- extremely flexible applications - for virtually all rail and guide carriage types
- compact design, easy to install, easy to operate
- operated with Allen key and torque wrench or alternatively with a manual clamping lever

HEMA MClamp in rail sizes 20 and 25



Dimensions MClamp



Manual clamping lever for MClamp

Rail size	B	L	H*	H1	A	L1	C	M	max. tightening torque [Nm]	holding force [N]
MClamp 20	59	24	30	19	4	15	15	M6	5,5	1000
MClamp 25	69	30	36	22	5	20	20	M6	7,5	1100

* H corresponds to the rail manufacturer's low carriage; when higher ones are used, spacer plates must be provided.

All dimensions in mm if not marked otherwise. Errors and omissions excepted.

**BEST PRICES - ATTRACTIVE
QUANTITY DISCOUNTS**



HEMA Maschinen- und Apparateschutz GmbH
Seligenstädter Straße 82, D-63500 Seligenstadt
Telefon: +49(0)6182/773-0, Telefax: +49(0)6182/773-35
info@hema-schutz.de, www.hema-schutz.de